

Door Series
GUTMANN S80+ HW

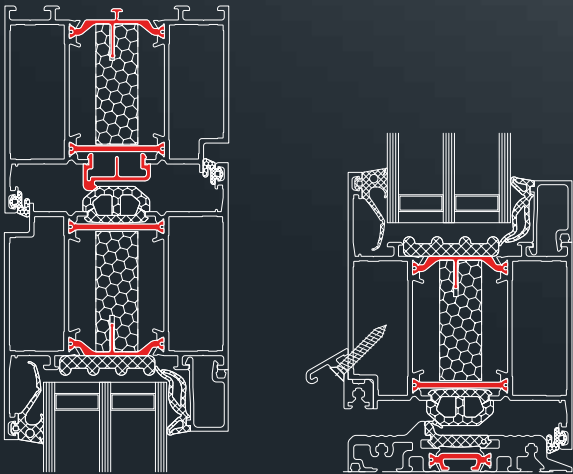


GUTMANN S80+ HW






System Description

- Premium door in the 80 mm series with peak value of $U_f = 1.8 \text{ W/m}^2\text{K}$
- Profiles in multiple chamber system with symmetrical structure to counter bimetallic effect
 - Uniform angle brackets for frame and sash profiles
 - Rational installation of mortise locks and striking plates with slide blocks
 - Identical frame profile for inward and outward opening doors
 - Identical GUTMANN surface-mounted and barrel hinges for inward and outward opening doors in aluminium and stainless steel
 - High sealing values against heavy rain and wind load
 - Door sash with optional sash-enclosing infill
 - Burglar resistance up to WK 3/RC 3
 - 1 and 2 sash doors (optional panic function) with side panel and transom light

System Cross Section



System Properties of Classes

	Water tightness	E 900		Wind load	C4/B4
	Air permeability	4		Operating forces	2
	Mechanical strength	5	PB 12-001311-PR 02		

Thermal Insulation



¹ Psi value: Thermix TX.N 0.042 W/mK; Ug value: 0.7 W/m²K; Element size: 1230 x 2180 mm

² Psi value: Swisspacer V 0.034 W/mK; Ug value: 0.6 W/m²K; Element size: 1230 x 2180 mm